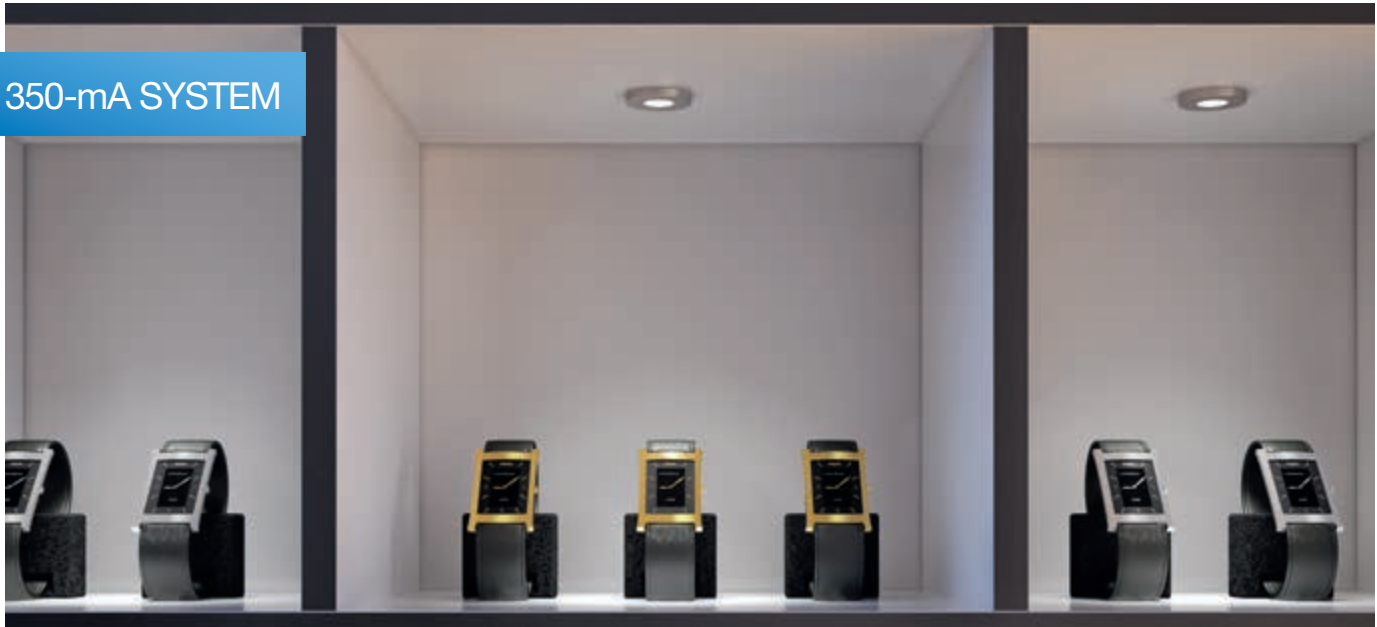


LED 4014

SPOTLIGHT



350-mA SYSTEM



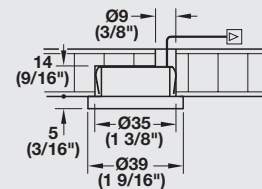
- > Recess mounted
- > Small design with high luminosity



> Dimmable



- > Driver see page 99
- > Drill bit see page 146



Item No.	833.78.060	833.78.061
SRP	\$36.00	\$36.00
Light Color (K)	4000 (cool white)	6000 (daylight)
Drill hole	Ø35 mm (1 3/8")	
Ø x L	39 x 20 mm (1 9/16" x 13/16")	
Wattage	1	
LEDs	1	
Lumen	89	91
Lumen per watt	89	91
CRI	85	83
Energy Efficiency class	A+	
Weighted energy consumption	1.10	
Material	Aluminum	
Finish	silver colored anodized, brushed	
Supplied with	2 m (78 3/4") lead, mounting material	

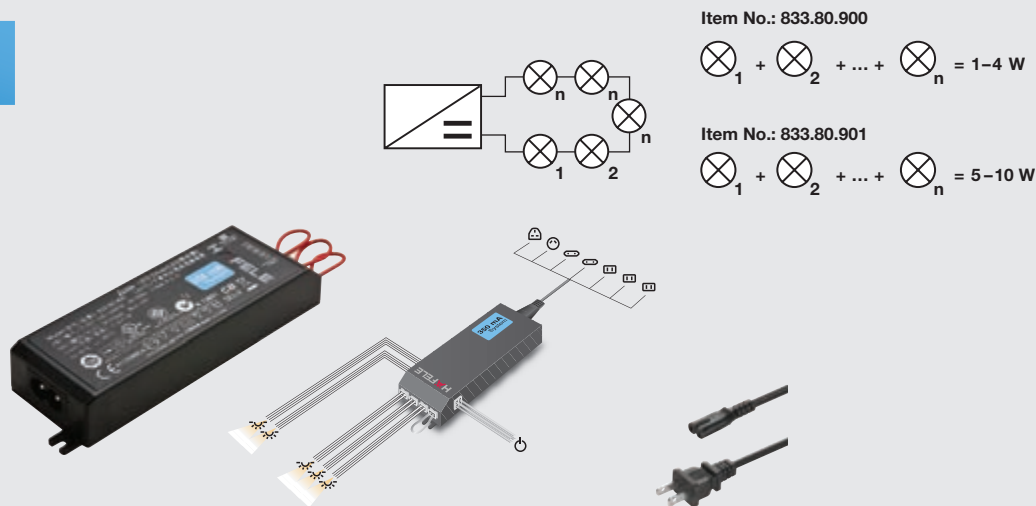
4000 K		6000 K		25°	
4000 lx	4513 lx			250	(9 13/16")
2300 lx	2432 lx			500	(19 11/16")
800 lx	840 lx			750	(29 1/2")
330 lx	339 lx			1000	(39 3/8")

LOOX LED DRIVER

CONSTANT VOLTAGE 350 mA DRIVER



350-mA SYSTEM



- > Suitable for all of the world's power systems
- > With an integrated port for a wide selection of switches

- > Degree of protection : IP20
- > LoOX drivers cannot be controlled by a dimmer wall switch
- > Switches see pages 113 - 116
- > Extension leads see page 127

Power cord with 90° plug
2 m (78 3/4")
> Item No. 833.89.017 **SRP \$5.00**

90° Plug adapter
> Item No. 833.89.018 **SRP \$7.00**

Replacement jumper cable
> Item No. 833.80.720 **SRP \$0.50**

Item No.	833.80.900	833.80.901
SRP	\$30.00	\$50.00
L x W x H	140 x 43 x 20 (5 1/2" x 1 11/16" x 13/16")	195 x 43 x 28 (7 11/16" x 1 11/16" x 1 1/8")
Wattage	1 – 4	5 – 10
Input voltage	100–240 V; 50–60 Hz	
Output current	350 mA	
Number of slots	4	10
Material/Finish	Plastic, black	
Supplied with	Mounting accessories, US power cord	

Country-specific 2 m (78 3/4") primary leads								3 m (118")
Item No.	833.89.000	833.89.001	833.89.002	833.89.003	833.89.016	833.89.005	833.89.050	833.89.008
SRP	\$10.00	\$4.00	\$4.00	\$4.00	\$4.00	\$4.00	\$4.00	\$6.00
Plug design								
Designation	UK	AU	EU	US	JP	CN	US	US
Voltage (V)	250	250	250	120	100	250	120	120